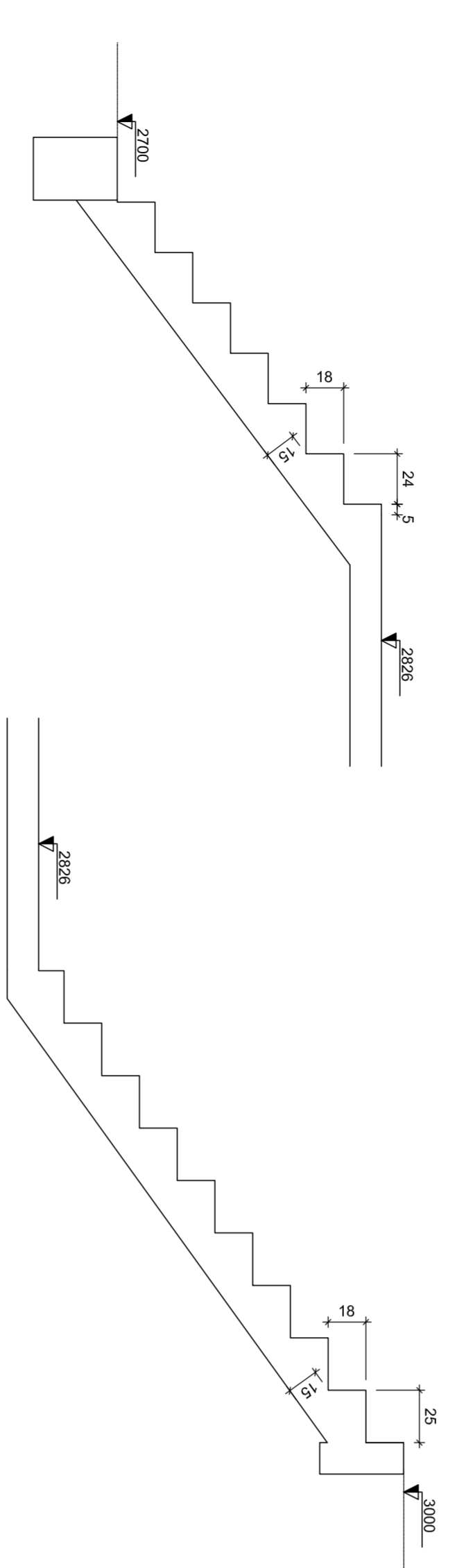
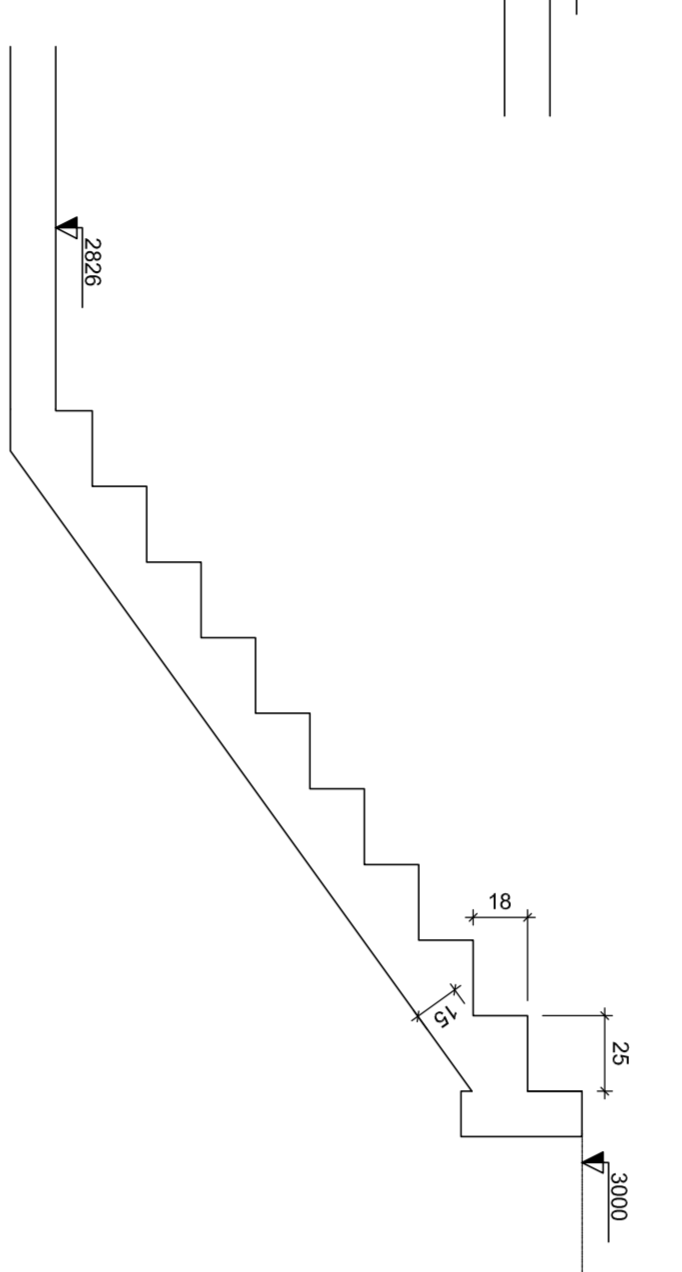


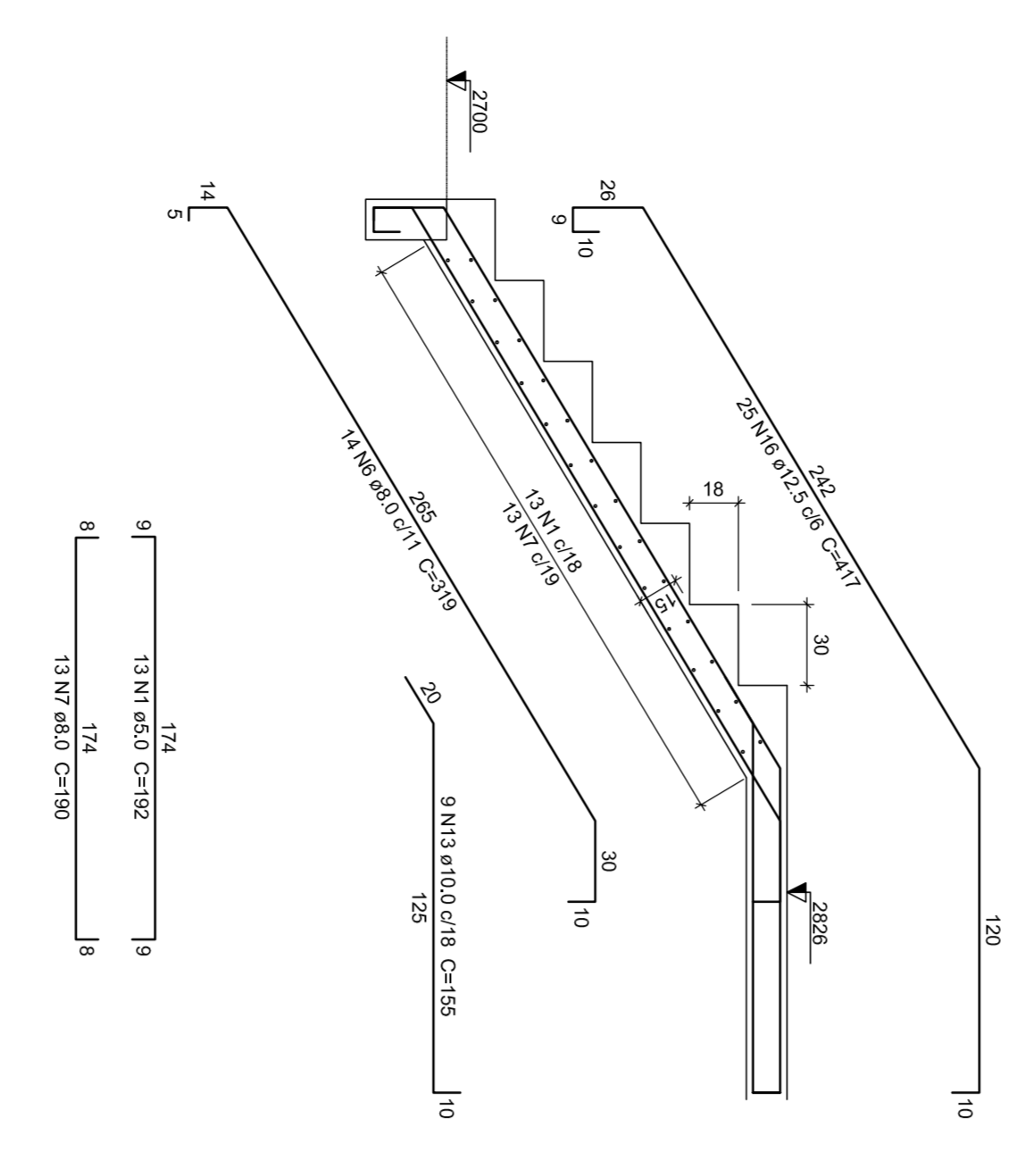
Armação positiva da escada E2
escala 1:25



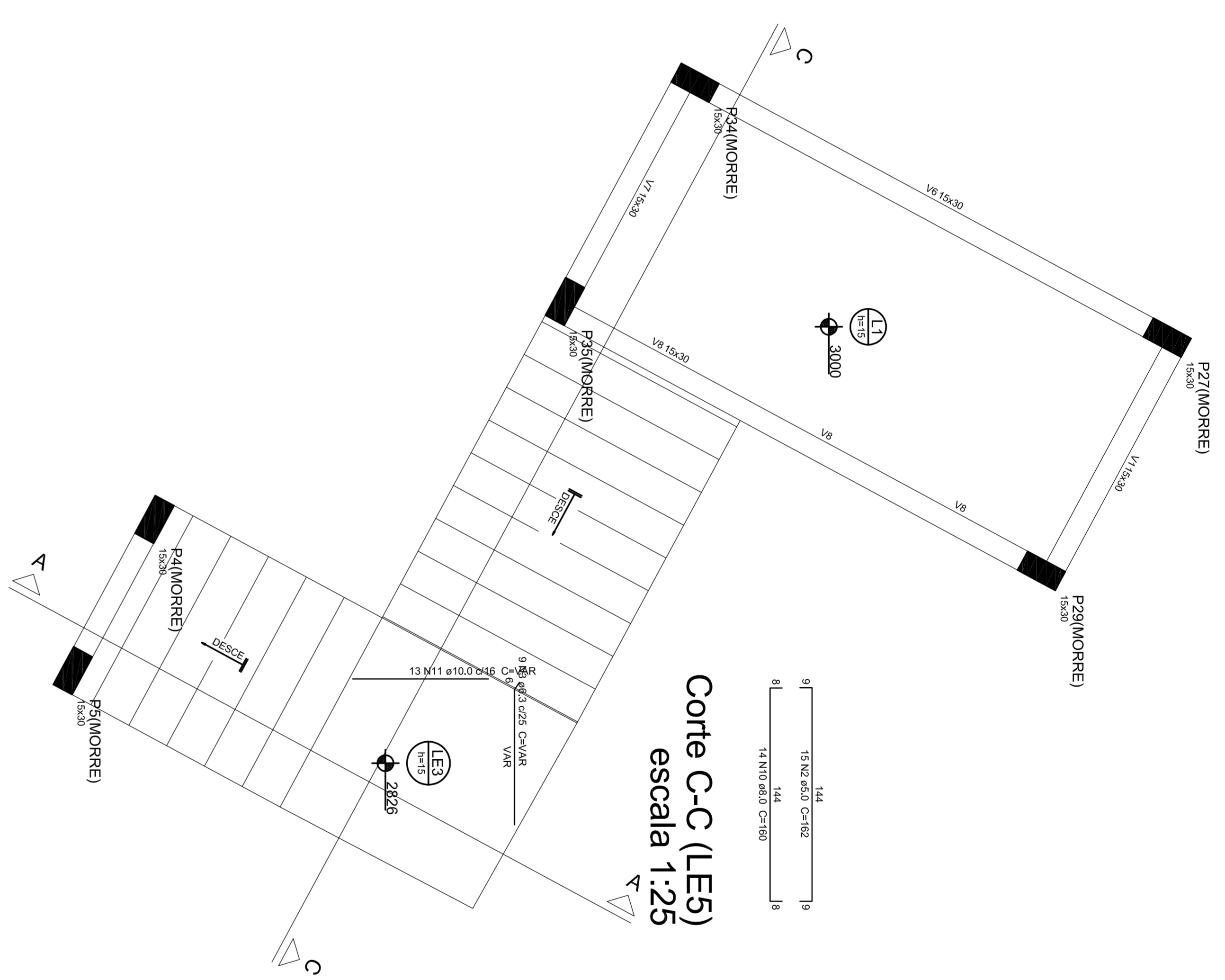
Corte B-B (LE2)
escala 1:25



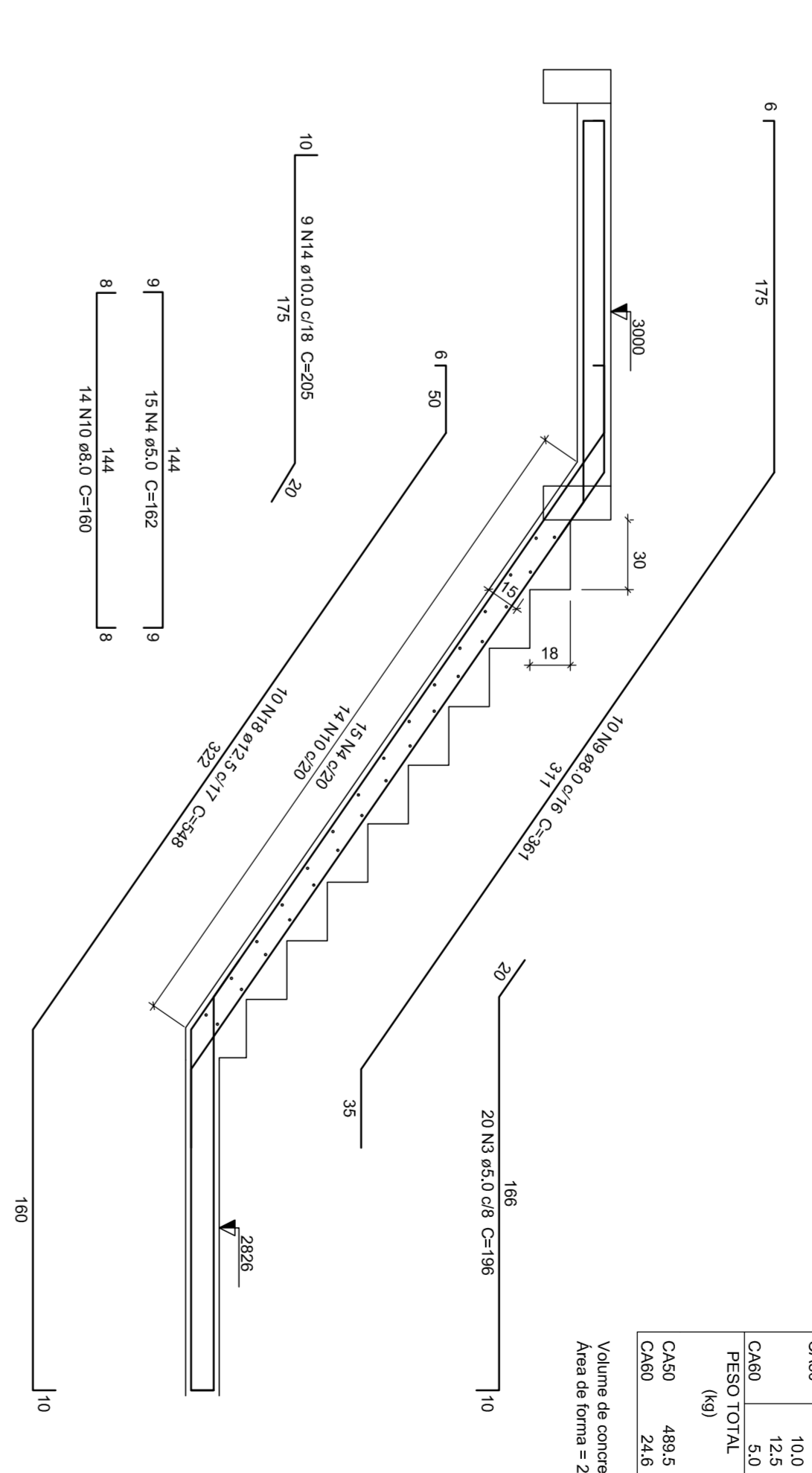
Corte D-D (LE6)
escala 1:25



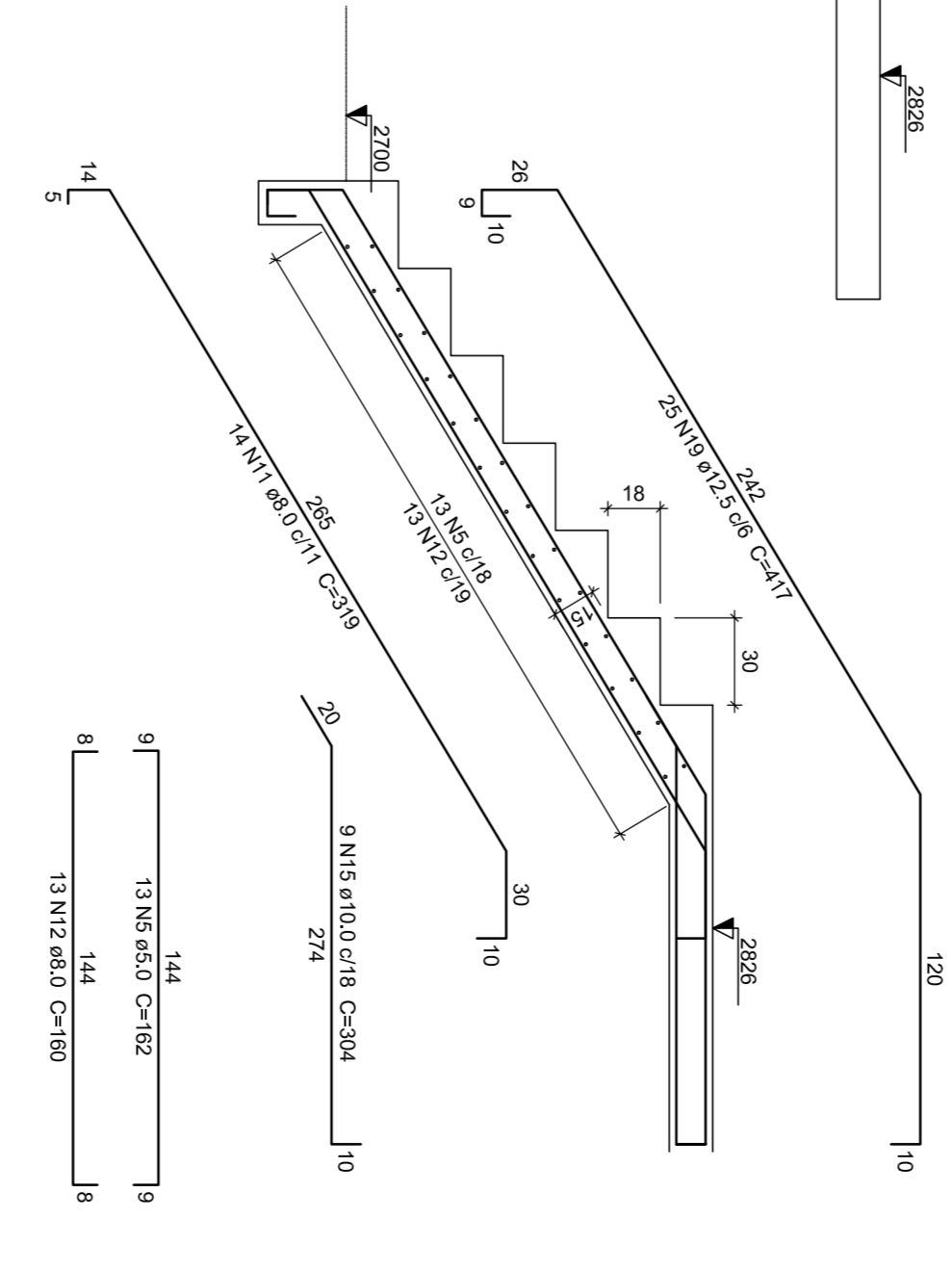
Corte D-D (LE6)
escala 1:25



Corte C-C (LE5)
escala 1:25



Corte A-A (LE3)
escala 1:25



Corte D-D (LE6)
escala 1:25

Relatório do aço

ACO	N.	DIAM.	QUANT.	DIAM.	C.T. (CM)
CABO	1	8,0	20	10,0	3000,0
	2	8,0	20	10,0	3000,0
CABO	3	8,0	15	10,0	2250,0
	4	8,0	15	10,0	2250,0
CABO	5	8,0	15	10,0	2250,0
	6	8,0	15	10,0	2250,0
CABO	7	8,0	10	10,0	1500,0
	8	8,0	10	10,0	1500,0
CABO	9	8,0	14	10,0	4200,0
	10	8,0	14	10,0	4200,0
CABO	11	10,0	9	10,0	2700,0
	12	10,0	9	10,0	2700,0
CABO	13	10,0	9	10,0	2700,0
	14	10,0	9	10,0	2700,0
CABO	15	10,0	20	10,0	6000,0
	16	10,0	20	10,0	6000,0
CABO	17	10,0	20	10,0	6000,0
	18	10,0	20	10,0	6000,0

Resumo do aço

ACO	DIAM.	C.T. (CM)	PESO * 10 ³ (KG)
CABO	8,0	3000,0	108,6
CABO	8,0	2250,0	81,2
CABO	8,0	1500,0	54,4
CABO	8,0	4200,0	151,2
CABO	8,0	2700,0	98,4
CABO	8,0	6000,0	216,8
CABO	10,0	2700,0	98,4
CABO	10,0	6000,0	216,8
CABO	10,0	6000,0	216,8
CABO	10,0	6000,0	216,8

APROVAÇÕES

PROJETA	REVISÃO	DATA	REVISÃO

COMPANHIA HIDROMINERAL DE PIRATUBA

EDUARDO FERRARI
ENGENHEIRO CIVIL
CREFIC 10824/3
DAU 17040/0

JANE F. SCHMIDT COSTA
ENGENHEIRA CIVIL
CREFIC 10194/5

COMPANHIA HIDROMINERAL DE PIRATUBA

ESTRUTURA DE FUNDAÇÃO - ESCADA/PASSARELA - NIVEL 3000

AV. DEZOTO DO FEVEREIRO, 2485 - PIRATUBA, SC

ESTRUTURA DE CONCRETO ARMADO

FORNIA ENGENHARIA DAS ESCADAS

NIVEL 2700 AO NIVEL 3000

PROJETO DE EXECUÇÃO

E 09-21